

① Circle the invertebrates.



chameleon



crab



hamster



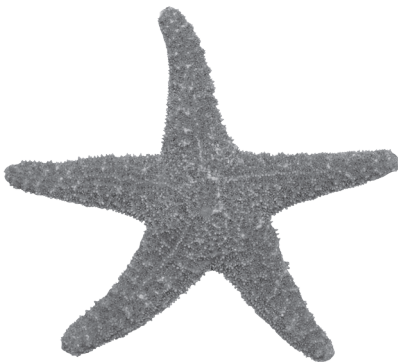
snail



goldfish



octopus



starfish



frog



wasp

② Are these sentences true or false?

- a. All invertebrates have a backbone.
- b. All invertebrates can walk, swim, crawl and fly.
- c. Invertebrates are the smallest group of animals on the Earth.
- d. All invertebrates have an exoskeleton to protect their bodies.
- e. Some invertebrates have a shell to protect their bodies.

true / false

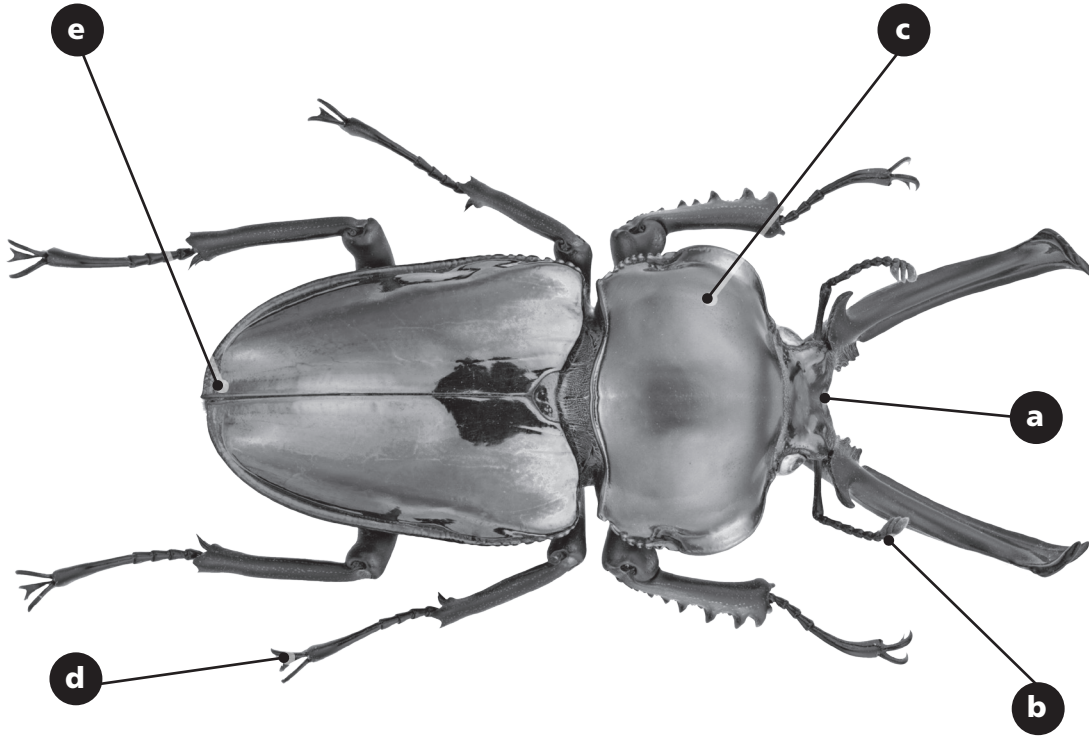
true / false

true / false

true / false

true / false

③ Identify the parts of an insect.



- legs *a* head abdomen antennae thorax

④ Match the invertebrate to the correct sub-category.

a. spider	insect
b. crab	bivalve
c. snail	crustacean
d. grasshopper	arachnid
e. mussel	gastropod

Note: A line connects 'a. spider' to 'arachnid'.

⑤ Choose the correct option.

- a. Crustaceans have a thick exoskeleton / shell to protect their body.
- b. Insects have **two / four** antennae and **six / eight** legs.
- c. Arachnids have **six / eight** legs and most have **six / eight** eyes.
- d. Gastropods have **eyes/ears** on the end of antennae.
- e. Most cephalopods **do / do not** have an external shell to protect their body.